

ITEM NO: [6a Supp](#)

DATE OF
MEETING: [July 7, 2009](#)



Lower Duwamish River Habitat Restoration Plan

Purpose of the Plan

- Bringing together different stakeholder groups to identify habitat sites
- A proliferation of habitat in the coming years
- Demonstrating that habitat will not be at the expense of maritime industry or other river users

Study Area



The Nature of Port Land Ownership on the River

- Terminals
- Ribbon Properties



Outreach Program -- Chronology

- April - lunch meetings with businesses
- April - project open house in Georgetown
- June - lunch hour bus tour
- July - series of three planning workshops, Georgetown and South Park
- August - mail-back planning maps / surveys sent to businesses
- November - 2nd open house for comments on draft plan
- December - SEPA comment period

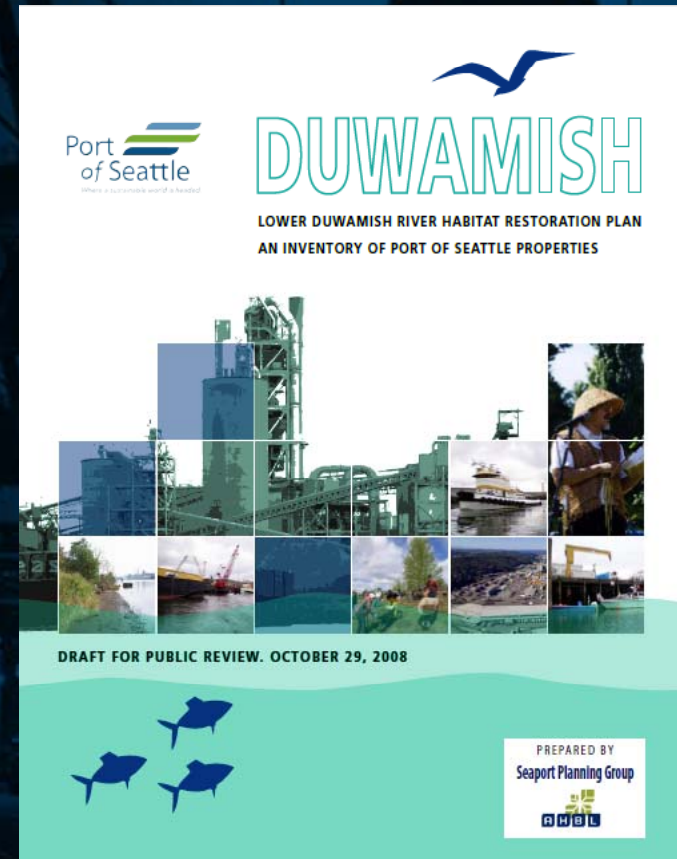
Outreach Program – Indications of Success

- Adapted the structure of the outreach program with enhanced results.
- Use of the internet – 149 email addresses collected from website alone.
- Cases of businesses being very supportive of habitat in proximity to their facilities.

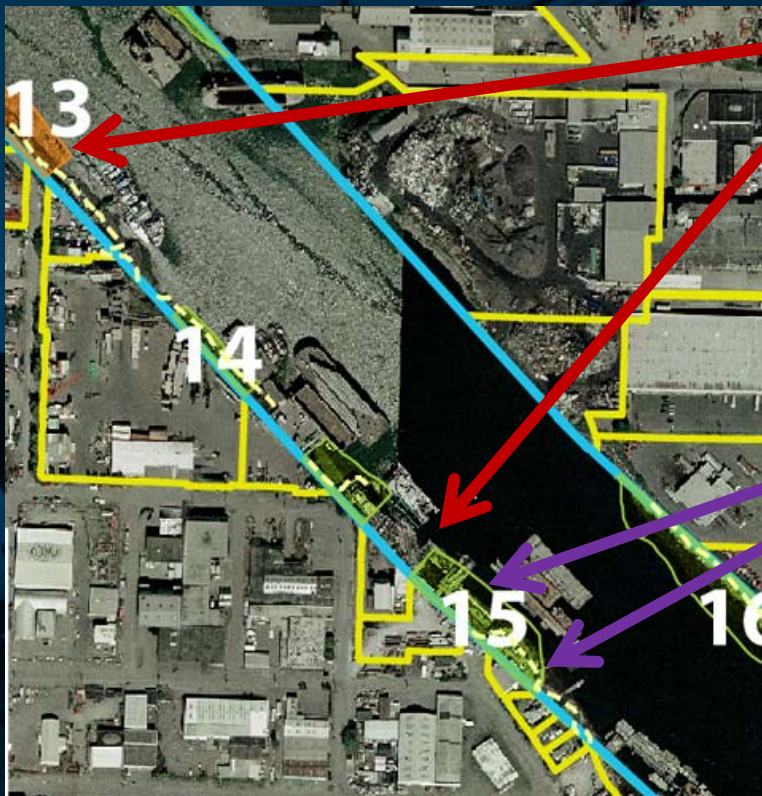


Plan Content

- 31 habitat sites in total
- Even distribution of sites throughout study area
- Total of 70 acres of habitat
- Translates to 30,000 lineal feet of shoreline
- Plan has demonstrated restoration and navigation can coexist.



Two Changes to Stakeholder Input Received After the Public Process



Maritime Business Stakeholder #1

- Six parcels associated with the business based at 7318 4th Avenue S. 1000' of bank total.
- Business owner has requested eliminating all habitat designations adjoining that property.
- Staff recommendation: No plan change.

Maritime Business Stakeholder #2

- Two parcels associated with the business based at 582 Riverside Dr. S.
- Business owner has requested eliminating all habitat designations adjoining that property.
- Staff recommendation: Upon learning of plans for new docks, staff recommends plan change to remove habitat adjoining both of the parcels (a total of 300' of removed habitat).

The January 13th Plan's Treatment of the Two Stakeholders (Figure 9, p. 40)

Next Step

- Return soon to Commission for adoption of plan as Port policy.

Summation

- Adopted plan will provide valuable framework once the implementation mechanisms are defined.